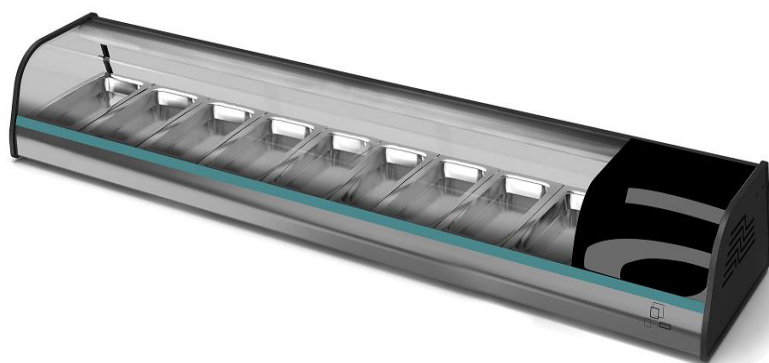




## TAPA CASE REFIGERATORS

### Manual Instructions

ACTC-55    ACTC-69  
ACTC-55 SL    ACTC-69 SL



**Manual instructions**  
Installation and Operation



**Manual de instrucciones**  
Uso y mantenimiento



**Bedienungshinweise**  
Installation und Betrieb



**Ręczny**  
Obsługa i konserwacja



**Manuel talimatları**  
Kurulum ve Çalıştırma



**Manuel d'instructions**  
Installation et fonctionnement



**Manual do instruções**  
Instalação e Operação

# INDEX

## ENGLISH

SPECIFICATION CHART/ TABLA DE ESPECIFICACIONES .....	1
MACHINE INTRODUCTION.....	1
<b>1.1</b> Introduction to machine & models .....	1
<b>1.2</b> Important safety information.....	1
INSTALLATION.....	2
<b>2.1</b> General information .....	2
<b>2.2</b> Transport, handling, unpacking, location.....	2
<b>2.3</b> Intended use and restrictions.....	3
<b>2.4</b> Manufacturer’s identification label description.....	3
<b>2.5</b> Installation and assembly .....	4
<b>2.6</b> Connections.....	4
OPERATION.....	4
<b>3.1</b> General information .....	4
<b>3.2</b> Control panel description .....	4
<b>3.2.1</b> Electronic Control .....	4
<b>3.3</b> Machine settings and programs .....	5
MAINTENANCE .....	6
<b>4.1</b> General safety rules.....	6
<b>4.2</b> Machine cleaning and maintenance routine.....	6
<b>4.2.1</b> Cleaning the Condenser Coil.....	6
<b>4.2.2</b> Draining the Unit .....	7
<b>4.3</b> Machine disposal .....	7
TROUBLESHOOTING CHART .....	7
<b>5.1</b> Troubleshooting.....	7
WARRANTY .....	8
<b>6.1</b> Limited Warranty.....	8

## SPECIFICATION CHART/ TABLA DE ESPECIFICACIONES

MODEL	HP	DIMENSIONS (in) mm	VOLTAGE (V)	AMP. (A)	REFRIG. CHARGE	REFRIG. TYPE	BTUS/ HR
ACTC 55	1/6	(55 x 16 x 9 ¾) 139 x 406 x 247	120	2.3	7.4 Oz	R-134a	850
			220	1.9			
ACTC 69	1/6	(69 x 16 x 9 ¾) 175 x 406 x 247	120	2.3	7.4 Oz	R-134a	850
			220	1.9			
ACTC 55 SL	1/6	(55 x 16 x 9 ¾) 139 x 406 x 247	120	2.3	8.8 Oz	R-134a	850
ACTC 69 SL	1/6	(69 x 16 x 9 ¾) 175 x 406 x 247	120	2.3	8.8 Oz	R-134a	850

## MACHINE INTRODUCTION

### 1.1 Introduction to machine & models

ASBER Display Cases bring the perfect combination of quality materials and modern design. Polished stainless steel, elegant curved glass and anodized aluminium work together under a bright LED blue light for an attractive product display. These self contained units keep a constant airflow, maintaining all the flavor and texture of your fresh dishes.

Details make this line unique .

- Factory balanced refrigeration system, environmentally friendly R-134a.
- Stainless steel construction with anodized aluminum side panel.
- Front curved glass design.
- Service side glass sliding door.
- Standard fluorescent light.
- Comes standard with 1/3 gastronorm pans - 1.5" deep.
- Compressor mount on right side.
- Cold plate design underneath the pans to keep products fresher and maintain products at 36°-46°F temperature in food pans..

### 1.2 Important safety information



**DANGER:** Power must be turned off and disconnected from the power source whenever performing maintenance, repair or cleaning the condensing unit. If machine still running when power is off, disconnect power at the circuit breaker before unplugging the machine.



**WARNING:** Machine and compressor warranties are void if failure is due to improper electrical installation. Do not introduce hot foods, chemical or corrosive products, drugs, or open beverage bottles.

## INSTALLATION

- 2.1 General information
- 2.2 Transport, handling, unpacking, location.
- 2.3 Intended use and restrictions.
- 2.4 Manufacturer's identification label description.
- 2.5 Installation and assembly.
- 2.6 Connections (electric, gas, water)

### 2.1 General information

You can find in you equipment the following symbols, or stickers to identify some type of warnings or useful information about your equipment.



### 2.2 Transport, handling, unpacking, location

Upon receiving your new ASBER Display Case, check the package and the machine for any damages that may have occurred during transportation. Visually inspect the exterior of the package, if damaged, open and inspect the contents with the carrier. Any damage should be noted and reported on the delivering carrier's receipt.

In the event that the exterior is not damaged, yet upon opening, there is concealed damage to the equipment notify the carrier immediately. Notification should be made verbally as well as in written form. Request an inspection by the shipping company of the damaged equipment. Retain all crating material until inspection has been made. Contact the dealer through which you purchased the unit.

Check the compressor compartment housing and visually inspect the refrigeration package. Be sure lines are secure and base is still intact.

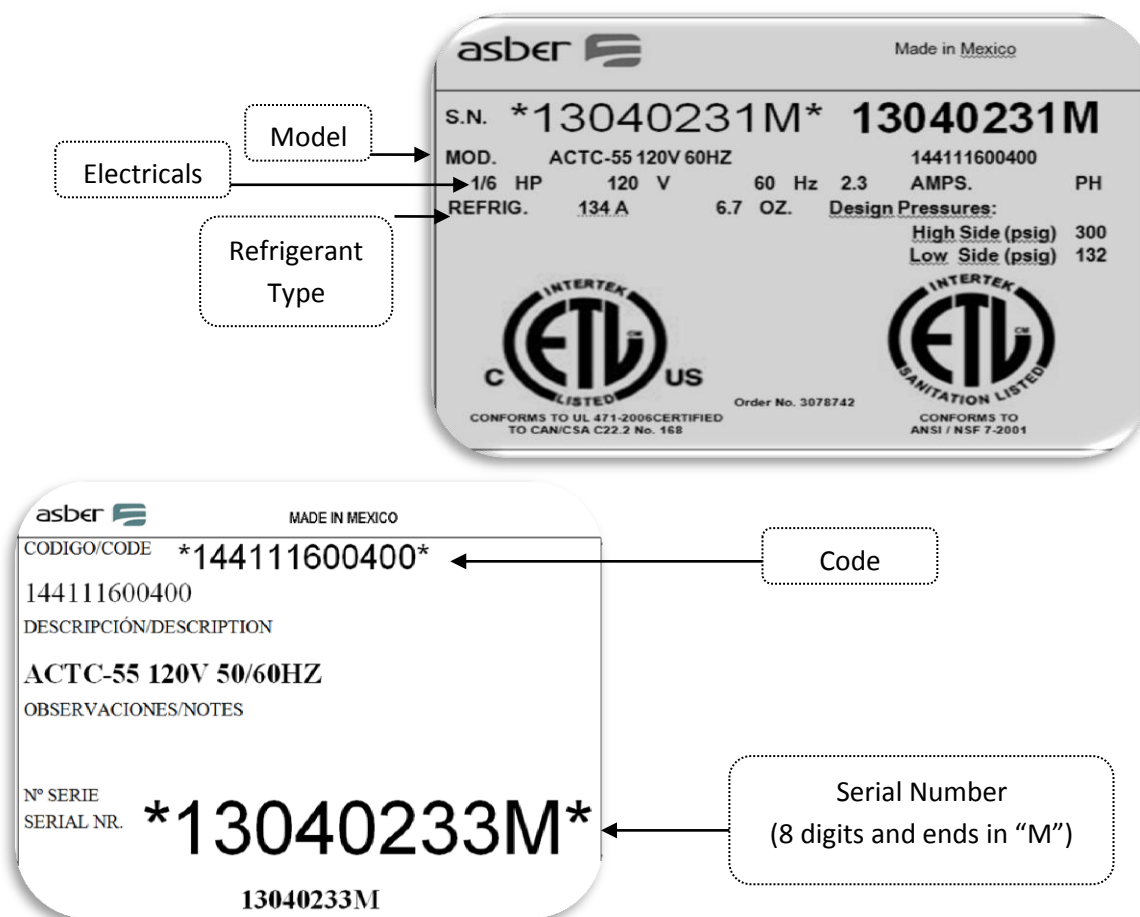
### 2.3 Intended use and restrictions

ASBER equipment is not designed for personal, family, or household purposes, and its sale for such purposes is not intended. In the event the equipment is so used, this warranty shall be null and void, and the equipment is so used, this warranty shall be null and void, and the equipment shall be deemed to have been sold “as is-where is” without any warranty of any kind, including without limitation any warranty of title, non-infringement, merchant-ability or fitness for a particular purpose. The equipment’s are conforms to UL and NSF- 7 standards.

If you want know more about other restrictions about your equipment see the warranty that is located in the final part of your manual.

### 2.4 Manufacturer’s identification label description

The data plate is located inside the cabinet, near the top front, left corner. Under no circumstances should the data plate be removed from the unit. The data plate is essential to identify the particular features of your machine and it is of great benefit to installers, operators, and maintenance personnel. It is recommended that, in the event the data plate is removed, you copy down the essential information in this manual for reference before installation. Removal of data plate will void the warranty.



## 2.5 Installation and assembly

Units represented in this manual are intended for indoor use only. Be sure the location chosen has a floor strong enough to support the total weight of the unit and contents. For the most efficient operation, be sure to provide good air circulation inside and outside of the unit.

### INSIDE CABINET

The first cleaning must be made when you unpack the unit and before switching it on. Clean it with water and a mild detergent. When it is clean and dry, insert the accessories in the appropriate places, for the best use of the user.

### OUTSIDE CABINET

Be sure the unit has good air circulation around it. Avoid hot corners and locations near stoves and ovens. It is recommended the unit be installed no closer than 2" from any wall. The place where the refrigerator is placed must be open and clean, avoiding that de fan of the condensing unit absorbs materials which are deposited then into the condenser blades and coil, which can produce failures.

**The unit should not be installed under ambient temperatures higher than 100 °F.**

**If the relative humidity is higher than 60 %, the door frames may sweat water. This is not a malfunctioning of the unit.**

## 2.6 Connections

Refer to the amperage data in this manual or on data plate and your local code or the National Electrical Code to be sure unit is connected to the proper power source. Verify correct incoming voltage according to the Data Plate information.

The data plate is located inside the unit, near the top front left corner. Under any circumstances should the data plate be removed from the unit.

The data plate is essential to identify the particular features of your unit and is of great benefit to installers, operators and maintenance personnel. It is recommended that, in the event the data plate is removed, you copy down the essential information in this manual for reference before installation.

## OPERATION

3.1 General information.

3.2 Control panel description.

3.3 Machine settings and programs.

### 3.1 General information

Good air flow inside the cabinet is critical. Do not block air flow to the fans. Allow three inches of space along the front, back, and sides.

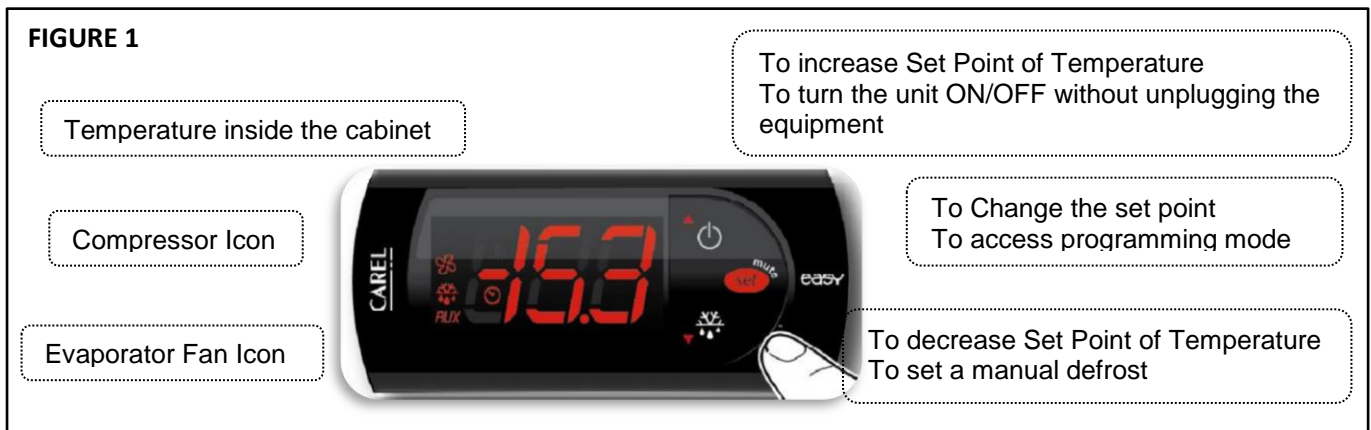
### 3.2 Control panel description

#### 3.2.1 Electronic Control

After connecting your unit, turn ON rocker switch located next to the controller. The display will light up showing the temperature inside the unit. Also, the compressor and fan icons will flash for a period of three minutes. After this delay the unit will start cooling.

Verify you don't have any alarms on the temperature controller. If after you turn ON the equipment the controller shows the alarm icon or an error code, call for technical service. They will help you fix the problem.

FIGURE 1



### 3.3 Machine settings and programs

#### Changing the Set Point of the temperature on the controller

The unit comes with a factory default set point ( 32°F Refrigerators). These set values will make the unit perform at its maximum capacity. Therefore, it is not recommended to change the set point. If set point needs to be changed, follow the next steps.

1. Push the SET button for one second. You should see a flashing number. Release the button.



2. Press the up and down arrows to increase or decrease the set temperature. Then press the set button to save the new set point.

Note:



The maximum value you can set in the controller is: For refrigerators: 5°C (40°F)

3. If you wish decrease the value of the set point for a new temperature, press the button DOWN arrow (see the picture below). Press this button to reach the desired value. Release the button and then press the SET button to keep, and save, the new value.

Note:



The minimum value you can set in the controller is: For refrigerators: -1°C (30°F)

#### Manual Defrost

To select manual defrost, hold the button DOWN arrow for 5 seconds. The snow flake icon will appear on the display. When this icon is solid it indicates that the equipment is in Defrost mode.



To exit manual defrost, hold the DOWN button arrow for 5 seconds. The snow flake icon will turn off. Wait 2 minutes for the compressor to start

## MAINTENANCE

- 4.1 General safety rules.
- 4.2 Machine cleaning and maintenance routine.
- 4.3 Machine disposal.

### 4.1 General safety rules

Neglecting the condenser coil cleaning procedures WILL VOID YOUR WARRANTY associated with the compressor or cost to replace the compressor!

Proper cleaning of stainless steel requires soft cloths or plastic scouring pads. Never use steel pads, wire brushes or scrapers!

### 4.2 Machine cleaning and maintenance routine

Cleaning solutions need to be alkaline or non-chloride cleaners. Any cleaner containing chlorides will damage the protective film of the stainless steel. Chlorides are also commonly found in hard water, salts, and household and industrial cleaners. If cleaner containing chlorides are used be sure to rinse repeatedly and dry thoroughly upon completion.

Routine cleaning of stainless steel can be done with soap and water. Extreme stains or grease should be cleaned with a non-abrasive cleaner and plastic scrub pad. There are also stainless steel cleaners available which can restore and preserve the finish of the steels protective layer.

Never use and acid based cleaning solution! Many food products have an acidic content which can deteriorate the finish. Be sure to clean the ALL food products from any stainless steel surface. Common items include peppers, tomatoes and other vegetables.

#### 4.2.1 Cleaning the Condenser Coil

Disconnect machine. Remove front bottom panel and carefully slide out the condensing unit. The condenser coil requires regular cleaning; recommended every 30-60 days, depending of the accumulation of dust and grease. If the buildup on the coil consists of only light dust and debris the condenser coil can be cleaned with a simple brush. Heavier dust build up may require a vacuum or even compressed air to blow through the condenser coil. If heavy grease is present there are de-greasing agents available for refrigeration use and specifically for the condenser coils. The condenser coil may require a spray with the de-greasing agent and then blown through with compressed air.

Be sure all electrical and mechanical parts are dry before turning on the power.

Never use a high pressure water wash for this cleaning procedure as water can damage the electrical components located near or at the condenser coil. Do not place filter material in front of condenser coil. This material blocks air-flow to the coil similar to having a dirty coil!

If you keep the Condenser clean you will minimize your service expense and lower your electrical costs. Failure to maintain a clean condenser coil can initially cause high temperatures and excessive run times. Continuous operation with dirty or clogged condenser coils can result in compressor failures.

To put back the condensing unit in its place, slide in the unit carefully. BE SURE DRAIN PIPE IS LOCATED OVER THE PAN. Replace front bottom panel



### 4.2.2 Draining the Unit

Each unit has a drain located inside the unit which removes the condensation from the evaporator coil and evaporates it at an external condensate evaporator pan. Each drain can become loose or disconnected from moving or bumping the drain.

**IF YOU NOTICE EXCESSIVE WATER ACCUMULATION ON THE INSIDE OF THE UNIT** be sure the drain tube is connected

**IF WATER IS COLLECTED UNDERNEATH THE UNIT** you may want to check the leveling of the unit, because it is important by the properly drain, if your floor is not level this can also cause drain problems. Be sure all drain lines are free of obstructions; typically food product is found blocking drain lines causing water to back up and overflow the drain pans.

### 4.3 Machine disposal

The product's life-cycle is around 7 to 10 year from the use an operation date.

Asber equipment is manufactured without dangerous or toxic materials. Some parts of the equipments are biodegradable.

The disposing after the **product's life-cycle** shall be determined according to the rules and laws established in the city or State of residence.

REMEMBER TO TAKE CARE OF THE ENVIRONMENT.

## TROUBLESHOOTING CHART

### 5.1 Troubleshooting guide chart

#### 5.1 Troubleshooting

Follow the next steps before requesting warranty service. Failure to do so, may result in service charges for you and may void your warranty:

- 1) Refrigerator doesn't work:
  - a. Check that the machine is still connected.
  - b. Check that the ON/OFF button is in the ON position.
- 2) Refrigerator doesn't reach temperature :
  - a. Verify unit is not on saving mode
  - b. Check that control is not in OFF position.
  - c. Check that the machine is not in the defrost cycle.
  - d. Ensure Equipment is in a ventilated place and removed minimum of 2 inches from any other appliance and away from any heat source.
  - e. The environment maximum temperature must be 38 °C/ 100°F.
  - f. To insure proper air flow, product must not be placed higher than the maximum level mark located on the internal wall of the unit.
  - g. Check that the fan is moving.
  - h. Don't put any food inside until the unit has reached the proper temperature.
  - i. Be sure castors or legs were installed.
- 3) There is water inside the refrigerator:
  - a. Check that there is not food clogging the drain line.
- 4) There is water under the refrigerator:
  - a. Check that the cabinet is level.

Warning: To insure proper operation of equipment, it is recommended that the unit is on for 24 hours prior to the introduction of perishables.

## WARRANTY

### 6.1 Limited Warranty

**One Year Parts & Labor Warranty:** Asber Commercial, Inc. ("Asber") Warrants to the first-end-user purchaser (the "User") that the Asber brand equipment sold hereunder, except for parts and accessories which carry the warranty of a supplier (the "Equipment") will be free from defects in material and factory workmanship under normal conditions of use and maintenance for a period of one (1) years from the date of installation (Warranty commencement date), but in no event to exceed eighteen (18) months from the date of shipment from the factory. Warranty is Not Transferable.

**Warranty Coverage:** If there is a defect in material or factory workmanship covered by this Warranty reported to Asber during the period the applicable Warranty is in force and effect, Asber will repair or replace, at Asber's option, that part (ground shipping only) of the Equipment that has become defective and will cover labor cost (straight time only) within the corresponding warranty period of time Asber shall bear all labor costs (straight time only) in connection with the installation of these replacement parts, provided that, the installation is conducted by Asber or its authorized representative. Charges for warranty travel time round trip, total two (2) hours or up to 100 miles total. Any charges exceeding those stated herein must have prior authorization by Asber. Travel outside of the two (2) hours or 100 miles, and any work performed at overtime or weekend rates, would be the responsibility of the owner/user. In the case Asber deems the equipment non-repairable, said equipment will be replaced and the replacement unit(s) will carry the same warranty period from the original unit's installation date (original Warranty Commencement Date).

**Additional Three Year Compressor Part Warranty:** In addition to the warranty set above, Asber warrants the sealed compressor (part only) for an additional four (4) years based on the installation date. This warranty is for defects, both in workmanship and material, under the normal and proper use and maintenance service. The four (4) year extended warranty only applies to sealed parts of the compressor and does not apply to any other part or component, including, but not limited to cabinet, temperature control, refrigerant, motor starting equipment, fan assembly, or any other electrical or mechanical component.

#### Exclusions from and Conditions to Warranty

**Coverage:** This Warranty does not cover parts or accessories, which (a) carry the warranty of a supplier or (b) are abused. Application of this Warranty is further conditioned upon the following:

**Installation:** The Equipment must be properly installed in accordance with Asber's installation procedures and by a professional technician.

**No Alteration:** The Equipment must not have been modified or altered from its condition at the date of original installation.

**Use:** ASBER EQUIPMENT IS NOT DESIGNED FOR PERSONAL, FAMILY, OR HOUSEHOLD PURPOSES, AND ITS SALE FOR SUCH PURPOSES IS NOT INTENDED. IN THE EVENT THE EQUIPMENT IS SO USED, THIS WARRANTY SHALL BE NULL AND VOID, AND THE EQUIPMENT SHALL BE DEEMED TO HAVE BEEN SOLD "AS IS-WHERE IS" WITHOUT ANY WARRANTY OF ANY KIND, INCLUDING WITHOUT LIMITATION ANY WARRANTY OF TITLE, NON-INFRINGEMENT, MERCHANT-ABILITY OR FITNESS FOR A PARTICULAR PURPOSE.

**Proper Maintenance and Operation:** The Equipment must be properly maintained and operated in accordance with Asber's maintenance and operating procedures. All service, labor and parts must be acquired from Asber or its authorized service representative for the User's area.

This warranty is void if failure is a direct result of handling and/or transportation, fire, water, accident, misuse, acts of god(s), attempted repair by unauthorized persons, improper installation, if serial number has been removed or altered, or if unit is used for purpose other than it was originally intended.

Failure to comply with any of these conditions will void this Warranty. In addition, this Warranty does not cover defects due to apparent abuse, misuse or accident.

**Parts Warranty Coverage:** Asber warrants all new machine parts produced or authorized by Asber to be free from defects in material and workmanship for a period of 90 days from the Warranty Commencement Date. If any defect in material and workmanship is found to exist within the warranty period, Asber will replace the defective part without charge. Defective parts become the property of Asber.

Asber will have no responsibility to honor claims received after the date the applicable Warranty expires. Notwithstanding the foregoing, any claim with reference to the Equipment or any parts therefore for any cause shall be deemed waived unless submitted by the User to Asber within (30) days after the date the User discovered, or should have discovered, the claim. In connection with all claims under this Warranty, Asber will have the right, at its own expense, to have its representatives inspect the Equipment at the User's premises and to request all of the User's records pertaining to the Equipment to determine whether a defect exists, whether the conditions set forth in this Warranty have been satisfied, and whether or not the applicable Warranty is in effect.

THE FOREGOING WARRANTY IS IN LIEU OF AND EXCLUDES ALL OTHER WARRANTIES NOT EXPRESSLY SET FORTH HEREIN, WHETHER EXPRESS OR IMPLIED BY OPERATION OF LAW OR OTHERWISE, INCLUDING BUT NOT LIMITED TO ANY REPRESENTATION OF PERFORMANCE AND ANY IMPLIED WARRANTIES OF TITLE, NON-INFRINGEMENT, MERCHANTABILITY OR FITNESS FOR A PARTICULAR PURPOSE. NO OTHER WARRANTIES ARE AUTHORIZED ON BEHALF OF ASBER UNLESS SPECIFICALLY ISSUED BY ASBER.

Asber shall have no liability for incidental or consequential losses, damages including without limitation or expenses, loss of sales, spoiled food, profits or goodwill, claims whether or not on account of refrigeration failure or punitive or exemplary damages directly or indirectly arising from the sale, handling or use of the Equipment or from any other cause relating thereto, whether arising in contract, tort, warranty, strict liability or otherwise. Asber's liability hereunder in any case is expressly limited, at Asber's election, to repair or replacement of Equipment or parts therefore or to the repayment of, or crediting the user with, an amount equal to the purchase price of such goods.

**Prices & Specifications:** Asber reserves the right to change the prices and specifications of the equipment and/or material without notice. Prices are FOB Asber warehouses. All orders are subject to acceptance by Asber Commercial, Inc.

**Terms:** All orders are subject to credit approval. All Invoices not paid within the specified terms will be subject to a 1.5% per month delinquency charge. Buyer agrees to pay all costs of collection including such attorney's fees as may be allowed by law.

**Taxes:** This price list does not include any Federal, State, City or Local taxes, which may apply and are subject thereto.

**Shipment:** Requested carrier will be used upon request. Asber has the right to ship via any responsible carrier if requested carrier is unavailable. Shipping charges are payable by consignee and any claims arising as such charges shall be resolved between the carrier and the consignee. Shipping dates are approximates. Asber is not responsible for any delays in deliveries that are beyond our control.

**Damaged Merchandise:** Inspect shipment for any damage, before accepting it. If damaged, open and inspect the contents with the carrier. Any damage should be noted and reported on the delivering carrier's receipts. Asber does not assume nor responsibility for damages while in transit.

**Concealed Damage:** If there is concealed damage to the equipment, notify the carrier immediately. Notification should be made verbally as well as in written form. Request an inspection by the shipping company of the damaged equipment. Retain all crating material until inspection has been made.

**Cancellations & Returns:** Cancelled orders and returned merchandise are subject to a 25% restocking and handling charge. Written authorization is required for a return of any equipment. All equipment returned must be in its original factory crate; freight prepaid and must be in the same condition as originally shipped by Asber. Returns will only be authorized within 30 days of invoice date.